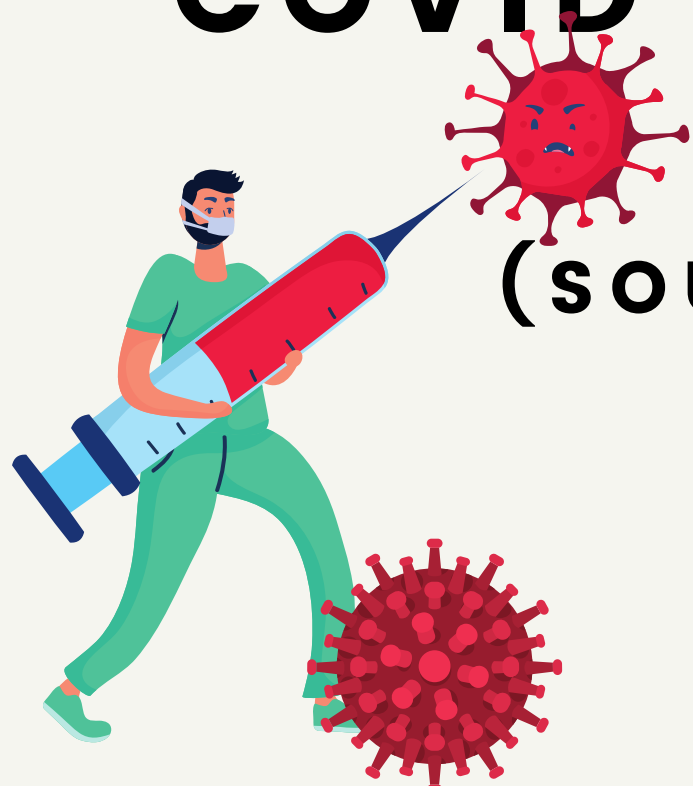




COVID-19 VACCINE INFORMATION



FREQUENTLY ASKED QUESTIONS (SOURCE: BRADFORD COUNCIL WEBSITE)

HOW SAFE IS THE VACCINE?

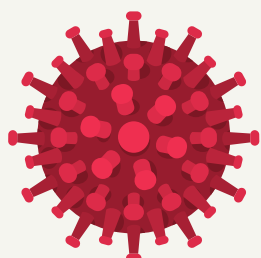
Yes. The NHS will not offer any Covid-19 vaccinations to the public until experts have signed off that it is safe. The MHRA, the official UK regulator, have said this vaccine is very safe and highly effective, and we have full confidence in their expert judgement and processes. Vaccines are highly regulated products. There are checks at every stage in the development and manufacturing process, and continued monitoring once it has been authorised and is being used.

HOW EFFECTIVE IS THE VACCINE?

In order to be declared safe and effective, a COVID-19 vaccine must pass certain tests and standards. There are different types of vaccine available and the exact degree of effectiveness differs very slightly. All of them are effective at significantly reducing the likelihood of getting Coronavirus, and reducing the severity of the virus if you do contract it.

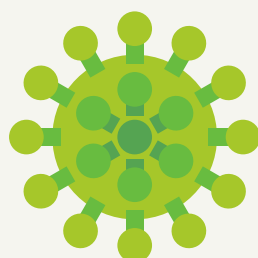
I CURRENTLY HAVE COVID SYMPTOMS?

People currently unwell and experiencing COVID-19 symptoms should not receive the COVID-19 vaccine until they have recovered.



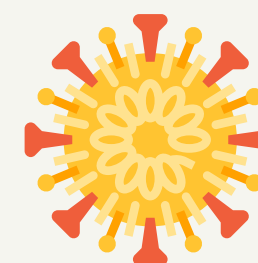
IS THE VACCINE SAFE FOR THE BAME COMMUNITY?

The phase three study of the Pfizer BioNTech COVID-19 vaccine demonstrated a vaccine efficacy of 95%, with consistent efficacy across age, gender and ethnicity. Overall, among the participants who received the COVID-19 vaccine 82.1% were White, 9.6% were Black or African American, 26.1% were Hispanic/Latino, 4.3% were Asian and 0.7% were Native American/Alaskan



WHAT ARE THE SIDE EFFECTS?

Like all medicines, vaccines can cause side effects. Most of these are mild and short-term, and not everyone gets them. Even if you do have symptoms after the first dose, you still need to have the second dose. You may not be protected until at least seven days after your second dose of the vaccine. Very common side effects include: having a painful, heavy feeling and tenderness in the arm where you had your injection. This tends to be worst around 1-2 days after the vaccine feeling tired, headache, general aches, or mild flu like symptoms



HOW DO I KNOW WHEN TO GO FOR A VACCINE?

When it is the right time people will receive an invitation to come forward. For most people this will be in the form of a letter either from their GP or the national booking system; this will include all the information they need, including their NHS number.

We know lots of people will be eager to get protected but we are asking people not to contact the NHS to get an appointment until they get their letter.

MYTHBUSTING (SOURCE: FULLFACT.ORG.UK)

DIFFERENT STORIES REGARDING THE VACCINE WILL CONSTANTLY EMERGE ON SOCIAL MEDIA.

**GOOD SOURCES FOR CHECKING FACTS ARE
WWW.FULLFACT.ORG.UK
WWW.BRADFORDCOUNCIL.ORG.UK
WWW.BBC.CO.UK**

THE BBC OFTEN HAVE INFORMATION AVAILABLE IN DIFFERENT LANGUAGES.

DO NOT ENGAGE (IF YOU REPLY/SHARE MISINFORMATION YOU HELP TO SPREAD IT)

SHARE OFFICIAL INFORMATION - SOURCES SUCH AS THE NHS, BRADFORD COUNCIL OR TRUSTED LOCAL CHARITIES/COMMUNITY ORGANISATIONS.